

## Gift Card Envelope

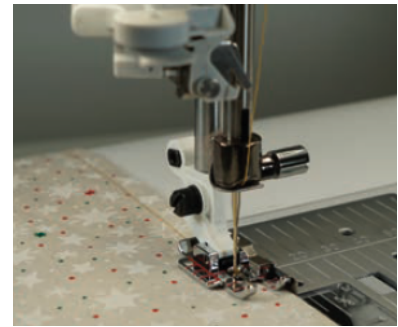
By: Meredith McClanahan



Create a quick & easy, one of a kind gift card envelope for any gift card throughout the year. Personalize with a holiday or special occasion embroidery!

## Shopping List:

- HUSQVARNA® VIKING® Sewing Machine
- [Adjustable ¼" Foot with Guide:](#)
  - Machine Group 1-8: Part #920456096
  - Machine Group 9: Part #920566096
- [Button Foot with Placement Tool:](#) Part #412934545
- 2 Coordinating Fabric Scraps
- Single Sided Iron-On Fusible Interfacing
- Coordinating 50 wt Cotton Thread
- 2 Coordinating Buttons
- HUSQVARNA® VIKING® Universal Needle: Size 80/12 Part #920537096
- Rotary Cutter, Ruler & Mat
- SINGER® SteamCraft Steam Iron & Ironing Board
- Bakers Twine
- Marking Pen
- Provided Pattern Piece
- Paper & Fabric Scissors



## Optional Supplies If Doing Embroidery:

- Coordinating Robison Anton 40 wt Rayon Embroidery Thread & Bobbin Thread
- HUSQVARNA® VIKING® Embroidery Needle: Size 90/14



- INSPIRA™ Tear-A-Way Stabilizer
- Embroidery Hoop
- mySewnet™ Embroidery Software

## Machine Preparation:

1. Attach the Button Foot.
2. Insert a HUSQVARNA® VIKING® Universal Size 80/12 needle into your machine.
3. Thread with 50 wt sewing thread on top & in the bobbin
4. Select the automatic button stitch on the sewing machine.

## Instructions:

1. Cut out the provided pattern piece with paper scissors..
2. Place the pattern piece on top of coordinating fabrics & cut out 1 of each.
3. Cut out 1 piece of the single sided fusible interfacing from the pattern piece.



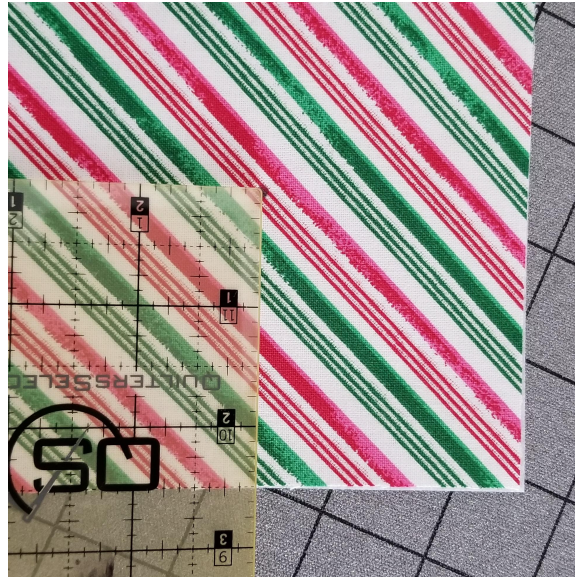
4. Fuse the single sided fusible interfacing to the wrong side of the main fabric piece, matching up all the sides. Follow the manufacturer instructions for fusing the interfacing & iron with your SINGER® SteamCraft Steam Iron.



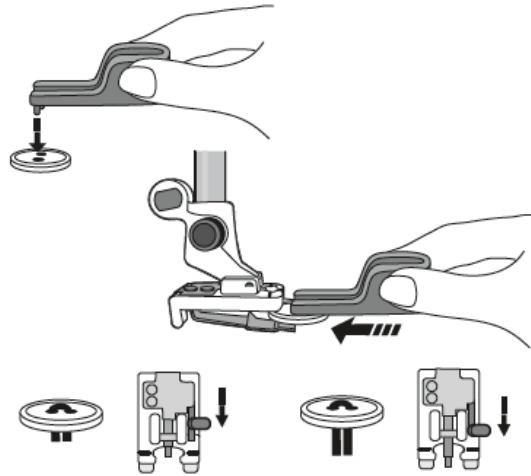
5. See optional embroidery instructions on page 11 to add personalization to your project. If you're not adding embroidery continue to the next step.
6. Markings for the buttons:
  - a. Mark 1" down from the envelope point with a marking pen.



- b. With a marking pen, mark a 2½" mark up from the bottom & centered.



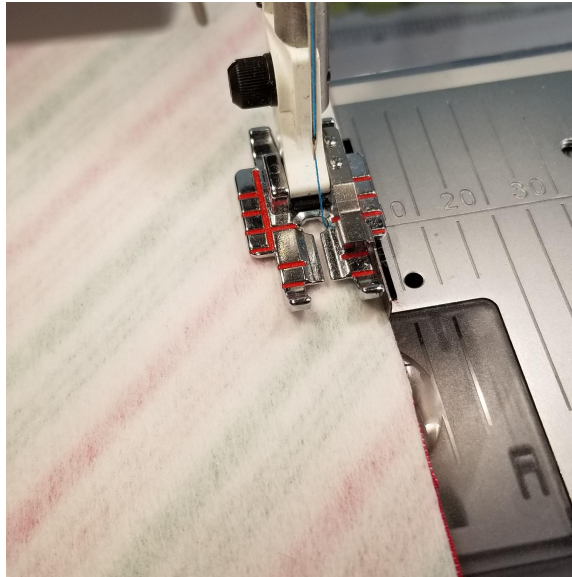
7. Sew on each button over the markings made in step #6.



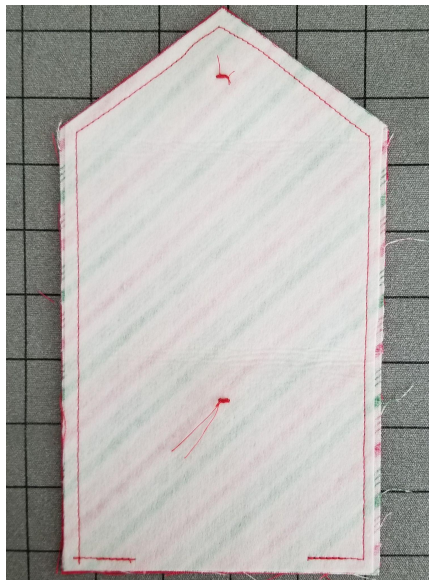
8. Place the lining fabric right side to the main fabric piece, lining up all the sides.



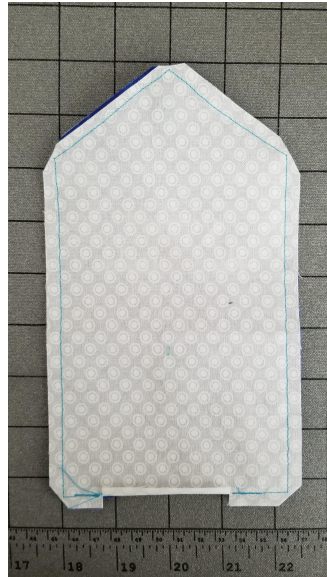
9. Place the Adjustable ¼" Foot with Guide on to your sewing machine.



10. Starting at the bottom sew around the envelope, leaving a 2" opening. Sew back & forth at the beginning & end to lock the stitches.



11. Clip the corners prior to turning.



12. Turn the envelope right side out, being mindful to push out the corners.



13. Press inward the turning seam to have a clean edge & press all the way around the envelope with your iron.





14. Sew the opening closed with a 1/8" seam allowance.



15. Fold the bottom of the envelope up 3" with the lining touching & clip or pin in place.



16. Starting at the bottom corner sew & all the way around the outer edge of the envelope.



17. Fold over the top flap & wrap bakers twine around the buttons to hold in place.



## Optional Embroidery Instructions:

The 'Happy Hanukkah' design was created within the mySewnet Embroidery Software.

1. Thread the embroidery machine with Robison Anton 40 wt Rayon Embroidery Thread on top & with bobbin thread on the bobbin.
2. Hoop INSPIRA™ Tear-A-Way stabilizer in the embroidery hoop.
3. Measure 3" down from the point of the envelope, find the center & mark with a marking pen.
4. Center the drawn line with the center of the embroidery hoop & stabilizer.
5. Embroider the desired design.



6. Once embroidery is finished go back to the main project instructions step #6.

